

STORM DEPOT OF AMERICA, INC

DBA STORM BUSTERS®

16MM CLEARVIEW® POLYCARBONATE STORM PANELS FOR NON-HVHZ

INSTALLATION ANCHORAGE DETAILS

PROJECT NO. 415-0223			
B	UPDATE TO CURRENT EDITION OF FBC	10/1/15	RJA
A	UPDATE TO 2010 FBC	06/21/12	TJH
REV	DESCRIPTION	DATE	BY

GENERAL NOTES:

- THIS PRODUCT WAS TESTED AND DESIGNED TO COMPLY WITH THE CURRENT EDITION OF THE FLORIDA BUILDING CODE (FBC) - BUILDING AND RESIDENTIAL VOLUME REQUIREMENTS, WIND ZONE 4, MISSILE LEVEL D AT THE DESIGN PRESSURE(S) STATED HEREIN.
- THE IMPACT PROTECTIVE SYSTEM SHALL BE INSTALLED IN A MANNER TO COMPLETELY COVER THE ENTIRE FENESTRATION (WALL OPENING) IN ALL DIRECTIONS AND BE SET FLUSH WITH THE WALL SURFACE TO THE GREATEST EXTEND POSSIBLE.
- WHEN INSTALLED AS INDICATED, THE PRODUCT HEREIN IS CONSIDERED A NON-POROUS IMPACT PROTECTIVE SYSTEM AND WHEN USED OUTSIDE THE HIGH VELOCITY HURRICANE ZONE (HVHZ), NO MINIMUM SEPARATION FROM THE PROTECTED FENESTRATION ASSEMBLY IS REQUIRED. THIS IMPACT PROTECTIVE SYSTEM IS NOT APPROVED FOR USE IN THE HIGH VELOCITY HURRICANE ZONE (HVHZ).
- THE PRODUCT DESCRIBED HEREIN IS DESIGNED FOR USE AS A FENESTRATION PROTECTION DEVICE DURING PERIODS OF HIGH WINDS. THE STORM PANEL IS TEMPORARY AND REMOVABLE AND NOT INTENDED TO BE A PERMANENT PART OF THE STRUCTURE (ALTHOUGH THE INSTALLATION ANCHORS SHALL REMAIN A PERMANENT PART OF THE STRUCTURE).
- ADEQUACY OF THE EXISTING STRUCTURAL CONCRETE / MASONRY AND 2X FRAMING AS A MAIN WIND FORCE RESISTING SYSTEM CAPABLE OF WITHSTANDING AND TRANSFERRING APPLIED PRODUCT LOADS TO THE STRUCTURE IS THE RESPONSIBILITY OF THE ENGINEER OR ARCHITECT OF RECORD.
- 1X AND 2X BUCKS (WHEN USED) SHALL BE DESIGNED AND ANCHORED TO PROPERLY TRANSFER ALL LOADS TO THE STRUCTURE. BUCK DESIGN AND INSTALLATION IS THE RESPONSIBILITY OF THE ENGINEER OR ARCHITECT OF RECORD.
- MAXIMUM PANEL SIZE: 48" x 96", 96" x 80" AND 75" x 66" (TWIN WITH PANEL CONNECTOR).
- PANELS MAY BE MOUNTED HORIZONTALLY OR VERTICALLY AS REQUIRED.
- THE DRAWING SECTIONS HEREIN DEPICT TYPICAL CONCRETE / MASONRY AND WOOD INSTALLATION ANCHORAGE CONNECTIONS. THESE DETAILS MAY BE USED INTERCHANGEABLE AS FIELD CONDITIONS DICTATE.
- STORM PANEL MATERIAL: POLYCARBONATE. SEE TABLE BELOW FOR MATERIAL PROPERTIES DEMONSTRATING COMPLIANCE WITH THE CURRENT EDITION OF THE FLORIDA BUILDING CODE.

INSTALLATION NOTES:

- ONE (1) INSTALLATION ANCHOR IS REQUIRED AT EACH ANCHOR LOCATION SHOWN.
- THE NUMBER OF INSTALLATION ANCHORS DEPICTED IS THE MINIMUM NUMBER OF ANCHORS TO BE USED FOR PRODUCT INSTALLATION.
- INSTALLATION DETAILS INTO WOOD AND CONCRETE/MASONRY SUBSTRATES INCLUDING DETAILS FOR BRICK VENEER OVER WOOD AND CONCRETE/MASONRY SUBSTRATES ARE SHOWN IN THE FOLLOWING.
 - ELEVATIONS SHOWING ANCHOR LAYOUT ON SHEETS 3, 4 AND 5.
 - SECTIONS SHOWING ANCHOR TYPES, SIZES, EMBEDMENTS AND EDGE DISTANCES ON SHEETS 6 AND 7.
- CONCRETE SCREW ANCHOR MANUFACTURERS SHOWN IN BILL OF MATERIALS ON SHEET 8. TYPICAL COMMERCIALLY AVAILABLE COMPONENTS ARE ACCEPTABLE FOR WOOD SCREWS, BOLTS AND OTHER FASTENING COMPONENTS SHOWN IN BILL OF MATERIALS ON SHEET 8.
- MINIMUM EDGE DISTANCE AND EMBEDMENT EXCLUDE WALL FINISHES (INCLUDING BUT NOT LIMITED TO STUCCO, FOAM, BRICK VENEER AND SIDING).
- FOR CONCRETE BLOCK APPLICATIONS, DO NOT INSTALL INSTALLATION ANCHORS INTO MORTAR JOINTS.
- INSTALLATION ANCHORS SHALL BE INSTALLED IN ACCORDANCE WITH ANCHOR MANUFACTURER'S INSTALLATION INSTRUCTIONS AND ANCHORS SHALL NOT BE USED IN SUBSTRATES WITH STRENGTHS LESS THAN THE MINIMUM STRENGTH SPECIFIED BY THE ANCHOR MANUFACTURER.
- INSTALLATION ANCHOR COMPACITIES FOR PRODUCTS HEREIN ARE BASED ON SUBSTRATE MATERIALS WITH THE FOLLOWING PROPERTIES:
 - WOOD - MINIMUM SPECIFIC GRAVITY IS 0.42.
 - CONCRETE - MINIMUM COMPRESSIVE STRENGTH OF 2500 psi AND COMPLIES WITH ACI 301.
 - MASONRY - STRENGTH CONFORMANCE TO ASTM C-90, MEDIUM DENSITY.
- INSTALLATION ANCHORS AND ASSOCIATED HARDWARE MUST BE MADE OF CORROSION RESISTANT MATERIAL OR HAVE A CORROSION RESISTANT COATING. DISSIMILAR METALS OR MATERIALS IN CONTACT WITH PRESSURE TREATED WOOD MUST BE PROTECTED TO PREVENT REACTION.

STORM DEPOT OF AMERICA, INC. DBA STORM BUSTERS®
 720 N. HARBOR CITY BLVD.
 MELBOURNE, FLORIDA 32925

TITLE: 16 MM CLEARVIEW® POLYCARBONATE STORM PANELS
 GENERAL AND INSTALLATION NOTES

PREPARED BY: BB DATE: 02/11/09
 DRAWN BY: N.T.S. DRAWING NO: STB0022
 REV: B SHEET: 1 OF 8

PTC PRODUCT DESIGN GROUP, LLC Phone: 321.690.1788
 PO BOX 520745 Fax: 321.690.1789
 LONGWOOD, FLORIDA 32752 Email: info@ptc-corp.com
 FBPE C.A. NO. 25935

Robert J. Amoroso
 Florida P.E. No. 49752

BRETT MARTIN LTD. MARLON ST PRODUCT PROPERTIES (BOM ITEM NO. 1)

TEST DESCRIPTION	TEST METHOD	AVERAGE RESULTS	
SELF IGNITION TEMPERATURE	ASTM D1929	>500°C (982°F)	
FLASH IGNITION TEMPERATURE	ASTM D1929	459°C (858°F)	
SMOKE DENSITY RATING	ASTM D2843	53.1	
LINEAR RATE OF BURN	ASTM D635	CC1 RATING	
TENSILE STRENGTH (MEAN)	ASTM D638 *	8730 PSI	9223 PSI
		BEFORE	AFTER

* THE CHANGE IN THE AVERAGE TENSILE STRESS OF THIS MATERIAL BETWEEN THE UNEXPOSED AND 4500 HOUR ASTM G 26 WEATHEROMETER EXPOSED SAMPLES WAS 5.6 PERCENT.

TABLE OF CONTENTS	
SHEET	SHEET DESCRIPTION
1	GENERAL AND INSTALLATION NOTES
3	ANCHOR SCHEDULES
3	ELEVATION AND ANCHOR LAYOUT
4	ELEVATION AND ANCHOR LAYOUT
5	ELEVATION AND ANCHOR LAYOUT
6	SECTIONS
7	SECTIONS
8	COMPONENT, BOM & HORIZ. SECTION

O.A. PANEL SIZE	DESIGN PRESSURE RATING (PSF)	IMPACT RATING
48" X 96"	±50.0	WIND ZONE 4 MISSILE LEVEL D (NOT FOR USE IN HVHZ)
96" X 80"	±50.0	
75" X 66"	±60.0	

ANCHOR SCHEDULES

SUBSTRATE	BOM ITEM NO.	ANCHOR	ANCHOR DIA. (IN)	MIN. EMBEDMENT (IN)	MIN EDGE DISTANCE (IN)
CONCRETE (f'c = 2500 psi min.)	2	TAPCON SG	1/4"	1	1 1/4
	5	PANELMATE TVAS	1/4"	2	1
	10	MALE PANELMATE	1/4"	2	1
	11	FEMALE PANELMATE	1/4"	1 3/4	2 1/2
	12	SAMMYS SSC	1/4"	1	1 1/4
	13	SAMMYS SSW	1/4"	1	1 1/4
	14	PANELMATE INSERT	1/4" - 20	1 5/8	2

SUBSTRATE	BOM ITEM NO.	ANCHOR	ANCHOR DIA. (IN)	MIN. EMBEDMENT (IN)	MIN EDGE DISTANCE (IN)
HOLLOW BLOCK (ASTM C90, Medium Weight Density)	2	TAPCON SG	1/4"	1 1/4	1 1/4
	5	PANELMATE TVAS	1/4"	1 1/4	1 1/4
	10	MALE PANELMATE	1/4"	1 1/4	2
	11	FEMALE PANELMATE	1/4"	1 1/4	2
	12	SAMMYS SSC	1/4"	1 1/4	1 1/4
	13	SAMMYS SSW	1/4"	1 1/4	1 1/4
	14	PANELMATE INSERT	1/4" - 20	1 1/4	1 3/4

SUBSTRATE	BOM ITEM NO.	ANCHOR	ANCHOR DIA. (IN)	MIN. EMBEDMENT (IN)	MIN EDGE DISTANCE (IN)
GROUTED FILLED BLOCK (ASTM C90, Medium Weight Density w/o Grout Filling per FBC)	2	TAPCON SG	1/4"	1 3/4	1 1/4
	5	PANELMATE TVAS	1/4"	1 1/4	1 1/4
	10	MALE PANELMATE	1/4"	1 1/4	2
	11	FEMALE PANELMATE	1/4"	1 1/4	2
	12	SAMMYS SSC	1/4"	NR	NR
	13	SAMMYS SSW	1/4"	NR	NR
	14	PANELMATE INSERT	1/4" - 20	1 1/2	1 3/4

NR = NOT RECOMMENDED

SUBSTRATE	BOM ITEM NO.	ANCHOR	ANCHOR DIA. (IN)	MIN. EMBEDMENT (IN)	MIN EDGE DISTANCE (IN)
WOOD (SG = 0.42)	2	TAPCON SG	1/4"	1 1/2	3/4
	5	PANELMATE TVAS	1/4"	1 1/2	3/4
	10	MALE PANELMATE	1/4"	1 7/8	3/4
	11	FEMALE PANELMATE	1/4"	1 7/8	3/4
	12	SAMMYS SSC	1/4"	1 1/2	3/4
	13	SAMMYS SSW	1/4"	1 1/2	3/4
	14	PANELMATE INSERT	1/4" - 20	1 5/8	3/4
	15	ALL POINTS SLOTTED BRASS WOOD BUSHING	1/4" - 20 X 5/8"	7/8	3/4

PROJECT NO. 415-0223

STORM DEPOT OF AMERICA, INC. DBA STORM BUSTERS®
720 N. HARBOR CITY BLVD.
MELBOURNE, FLORIDA 32925
TITLE: 16 MM CLEARVIEW® POLYCARBONATE STORM PANELS
ANCHOR SCHEDULES

PREPARED BY: BB
DRAWN BY: BB
SCALE: N.T.S.
REV: B

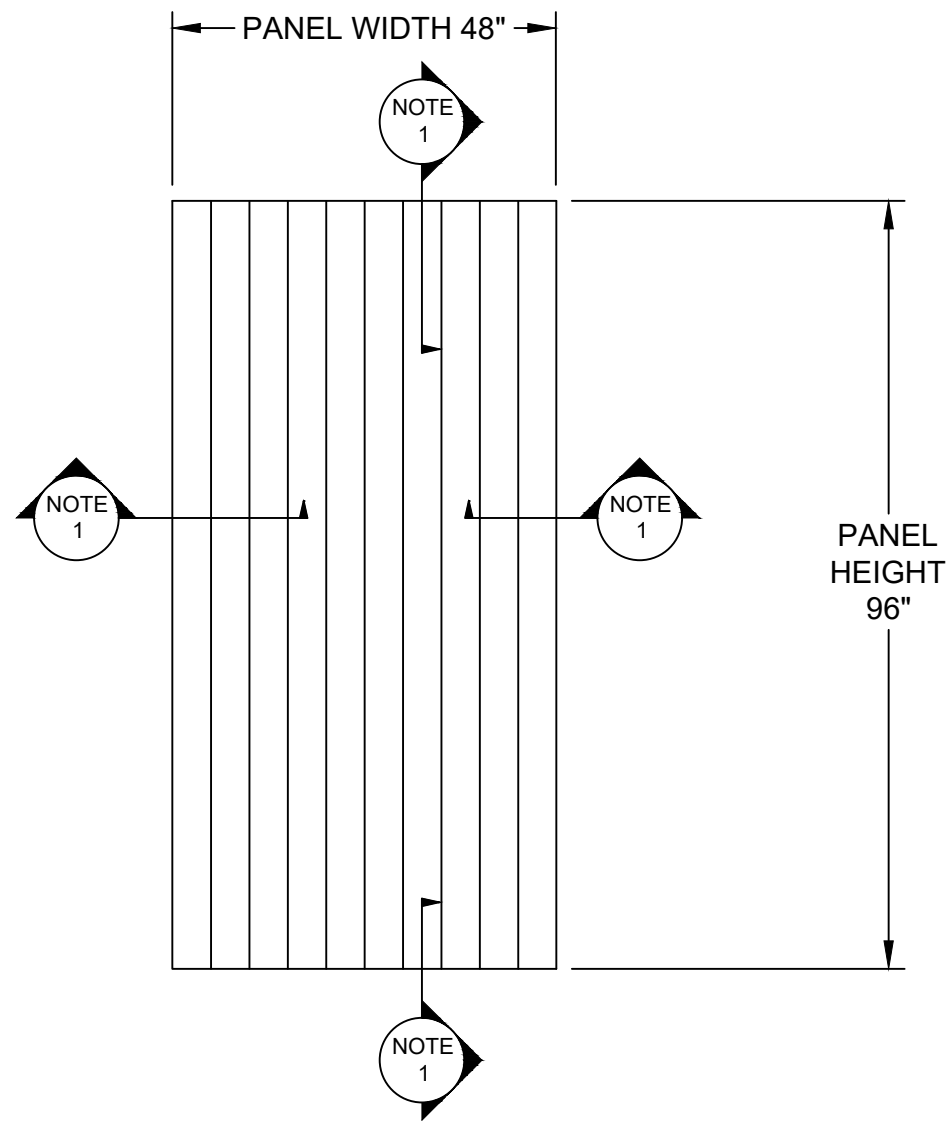
DATE: 02/11/09
DRAWING NO: STB0022
SHEET: 2 OF 8

PTC PRODUCT DESIGN GROUP, LLC
PO BOX 520745
LONGWOOD, FLORIDA 32752
FBPE C.A. NO. 255935
Phone: 321.690.1788
Fax: 321.690.1789
Email: info@ptc-corp.com



Robert J. Amoruso
Florida P.E. No. 49752

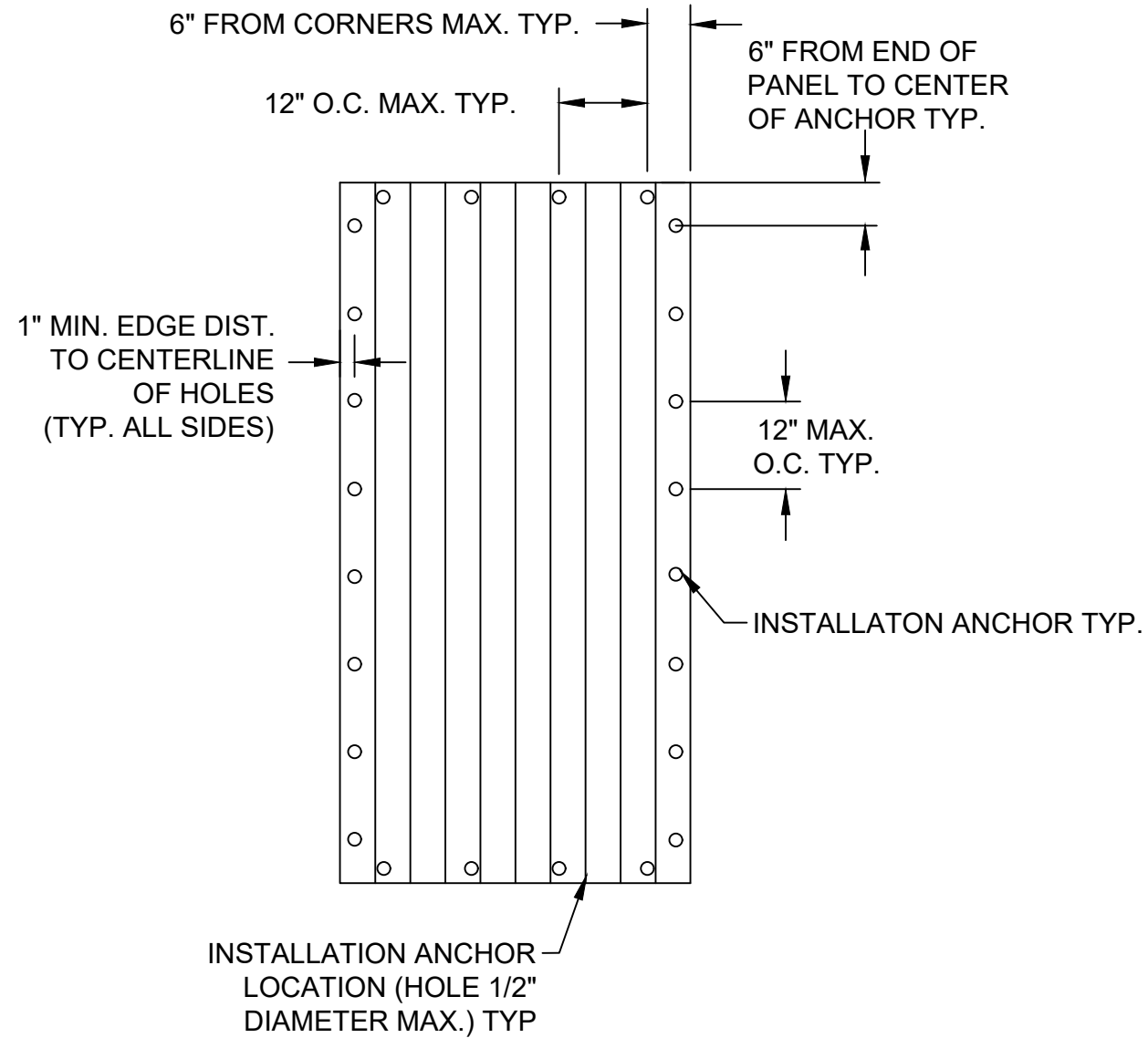
UPDATE TO CURRENT EDITION OF FBC	10/1/15	RJA
UPDATE TO 2010 FBC	06/21/12	TJH
DESCRIPTION	DATE	BY
REV		



ELEVATION

EXTERIOR VIEW
48" X 96" PANEL

NOTE 1:
HORIZONTAL OR VERTICAL SECTION VIEWS
SHOWN ON SHEETS 6 AND 7 APPLICABLE
THIS ELEVATION



ANCHOR LAYOUT

EXTERIOR VIEW
48" X 96" PANEL

PROJECT NO. 415-0223

REV	DESCRIPTION	DATE	BY
B	UPDATE TO CURRENT EDITION OF FBC	10/1/15	RJA
A	UPDATE TO 2010 FBC	06/21/12	TJH

STORM DEPOT OF AMERICA, INC. DBA STORM BUSTERS®
720 N. HARBOR CITY BLVD.
MELBOURNE, FLORIDA 32925

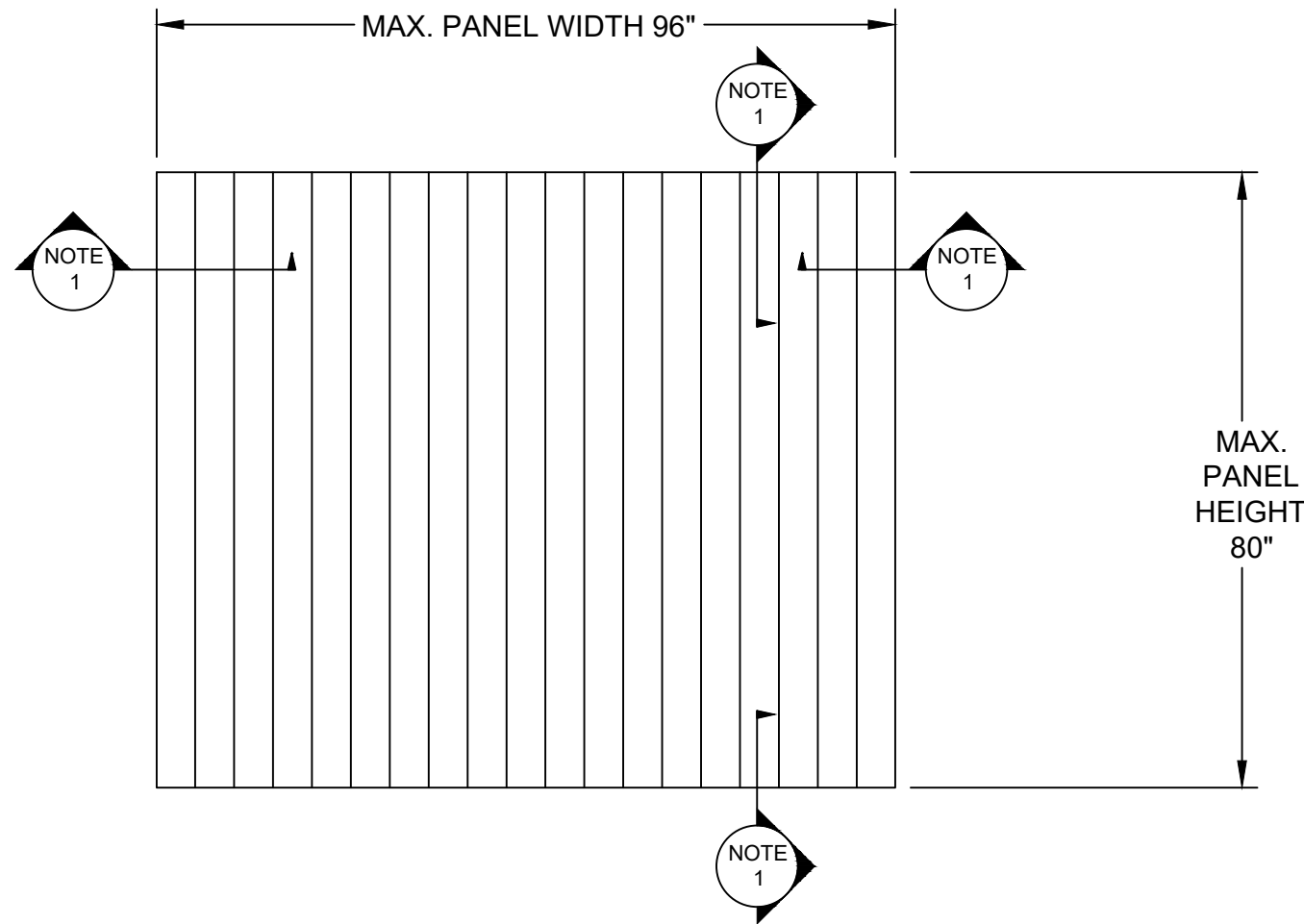
TITLE: 16 MM CLEARVIEW® POLYCARBONATE STORM PANELS
ELEVATION AND ANCHOR LAYOUT

PREPARED BY: PTC PRODUCT DESIGN GROUP, LLC
LONGWOOD, FLORIDA 32752
FBPE C.A. NO. 25935

DATE: 02/11/09
DRAWING NO: STB0022
SHEET: 3 OF 8

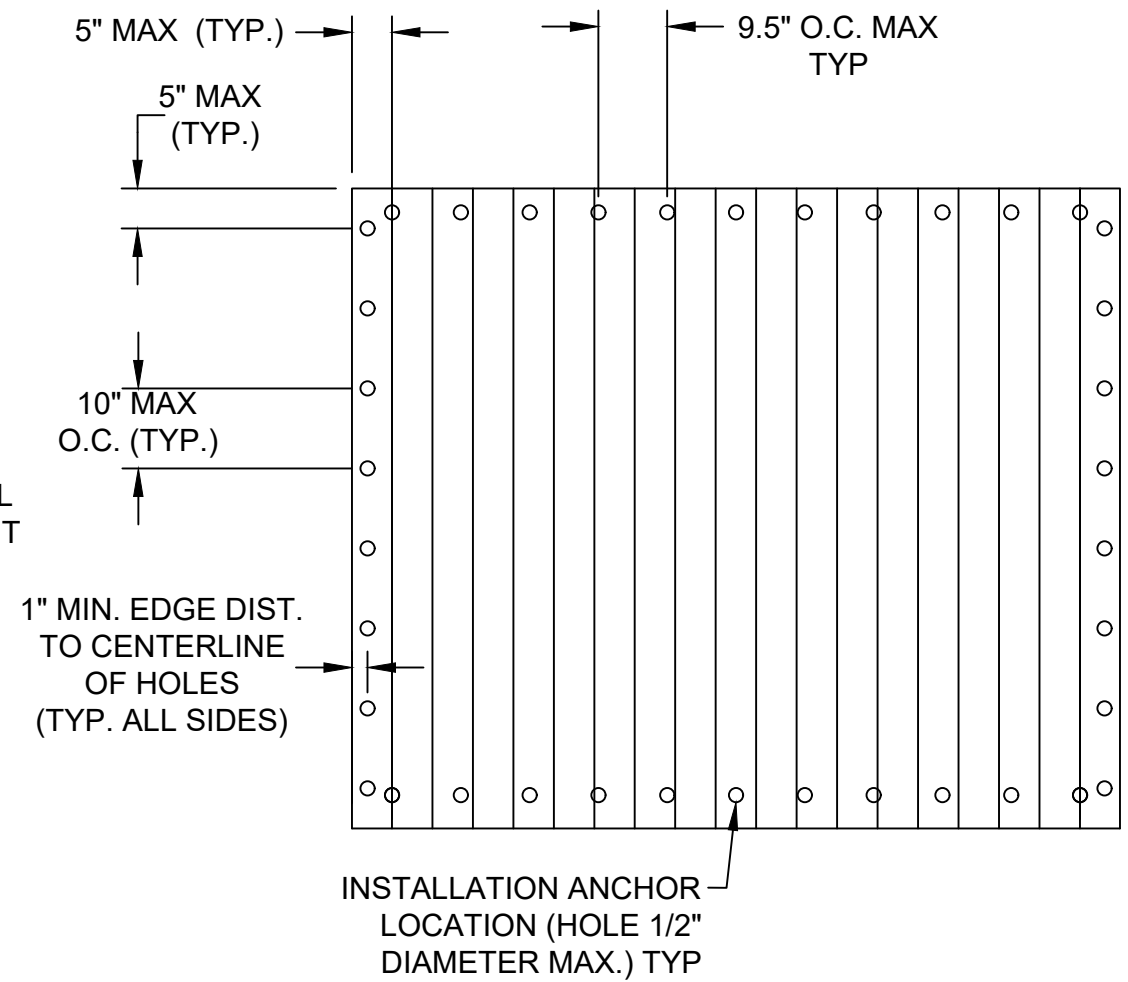
DRAWN BY: BB
SCALE: N.T.S.
REV: B

Robert J. Amoruso
Florida P.E. No. 49752



ELEVATION
EXTERIOR VIEW
96" X 80" PANEL

NOTE 1:
HORIZONTAL OR VERTICAL SECTION VIEWS
SHOWN ON SHEETS 6 AND 7 APPLICABLE
THIS ELEVATION



ANCHOR LAYOUT
EXTERIOR VIEW
96" X 80" PANEL

PROJECT NO. 415-0223

		IRJA	
B	UPDATE TO CURRENT EDITION OF FBC	10/1/15	
A	UPDATE TO 2010 FBC	06/21/12	TJH
REV	DESCRIPTION	DATE	BY

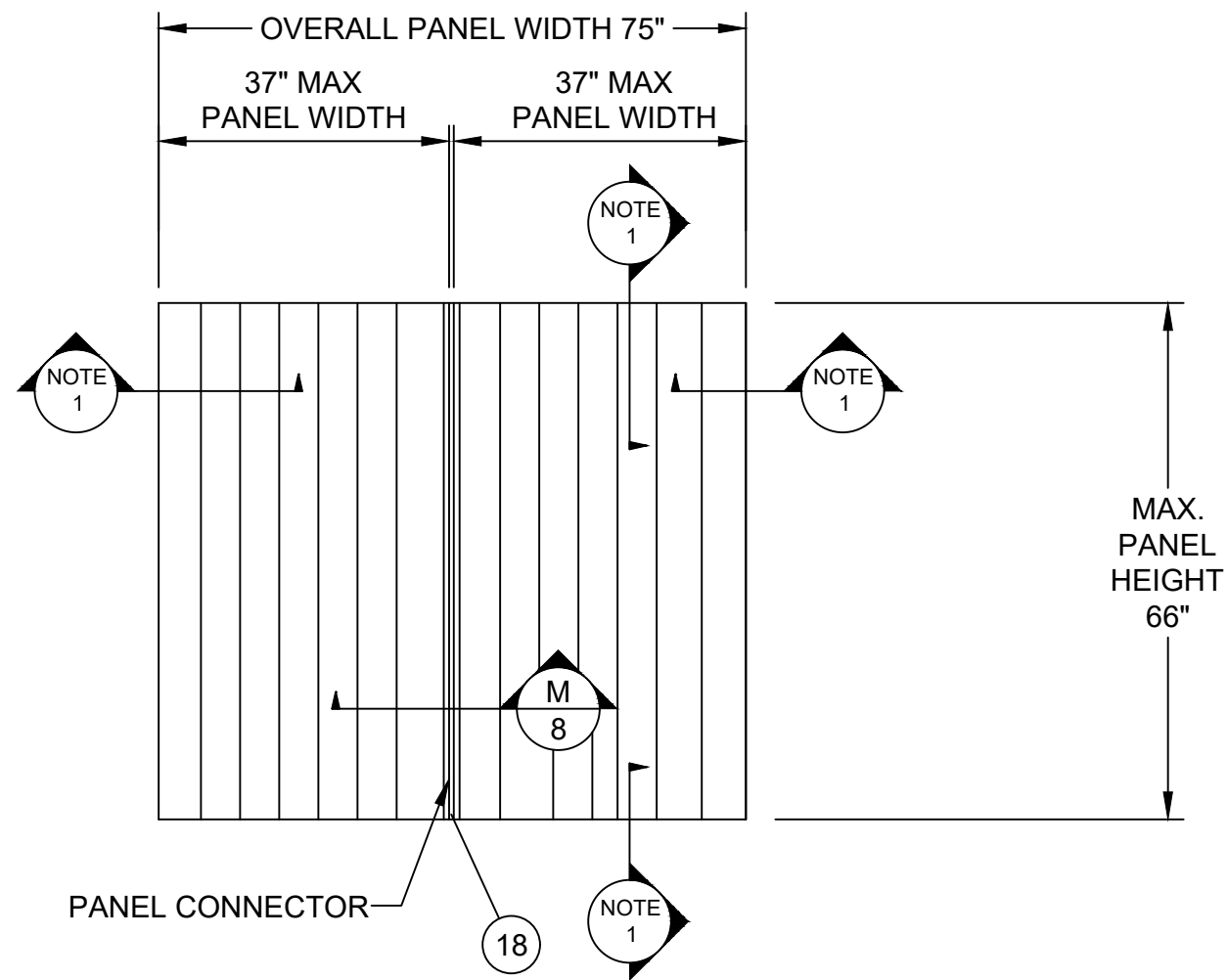
STORM DEPOT OF AMERICA, INC. DBA STORM BUSTERS®
720 N. HARBOR CITY BLVD.
MELBOURNE, FLORIDA 32925

TITLE: 16 MM CLEARVIEW® POLYCARBONATE STORM PANELS
ELEVATION AND ANCHOR LAYOUT

PREPARED BY: BB DATE: 02/11/09
SCALE: N.T.S. DRAWING NO: STB0022
REV: B SHEET: 4 OF 8

PTC PRODUCT DESIGN GROUP, LLC Phone: 321.690.1788
1600 S. BOULEVARD, SUITE 1000, MELBOURNE, FLORIDA 32925
LONGWOOD, FLORIDA 32752 Fax: 321.690.1789
FBPE CA. NO. 25835 Email: info@ptc-corp.com

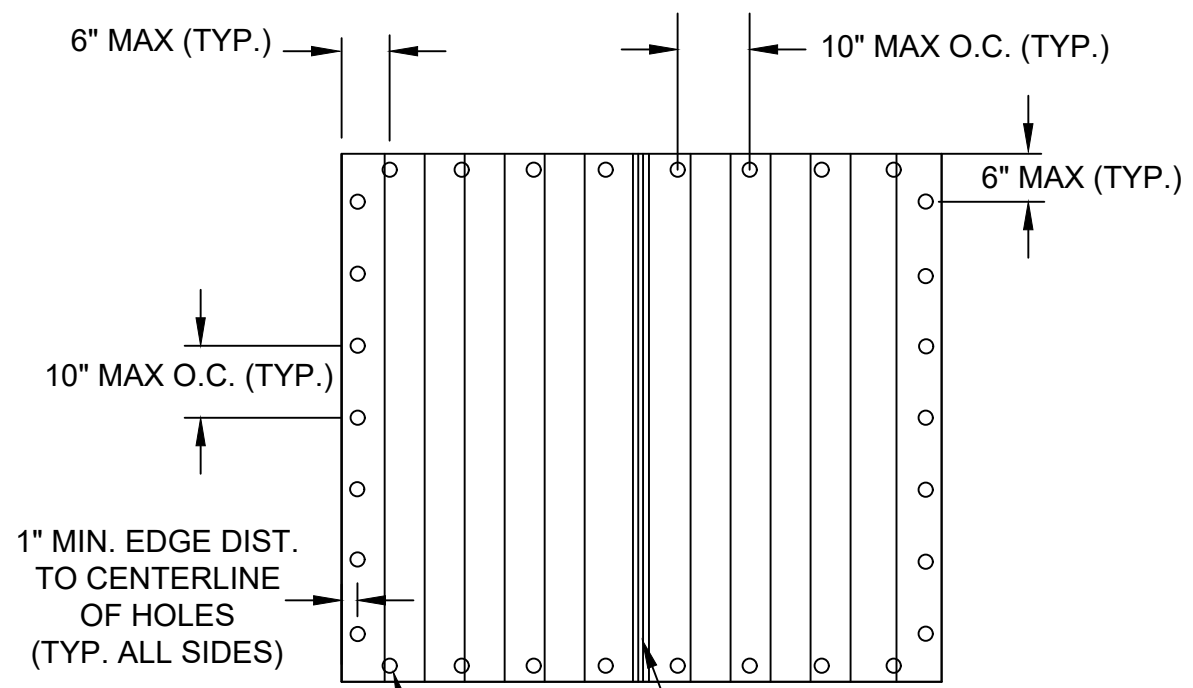
Robert J. Amoruso
Florida P.E. No. 49752



ELEVATION

EXTERIOR VIEW
75" X 66" PANEL

NOTE 1:
HORIZONTAL OR VERTICAL SECTION VIEWS
SHOWN ON SHEETS 6 AND 7 APPLICABLE
THIS ELEVATION



ANCHOR LAYOUT

EXTERIOR VIEW
75" X 66" PANEL

PROJECT NO. 415-0223

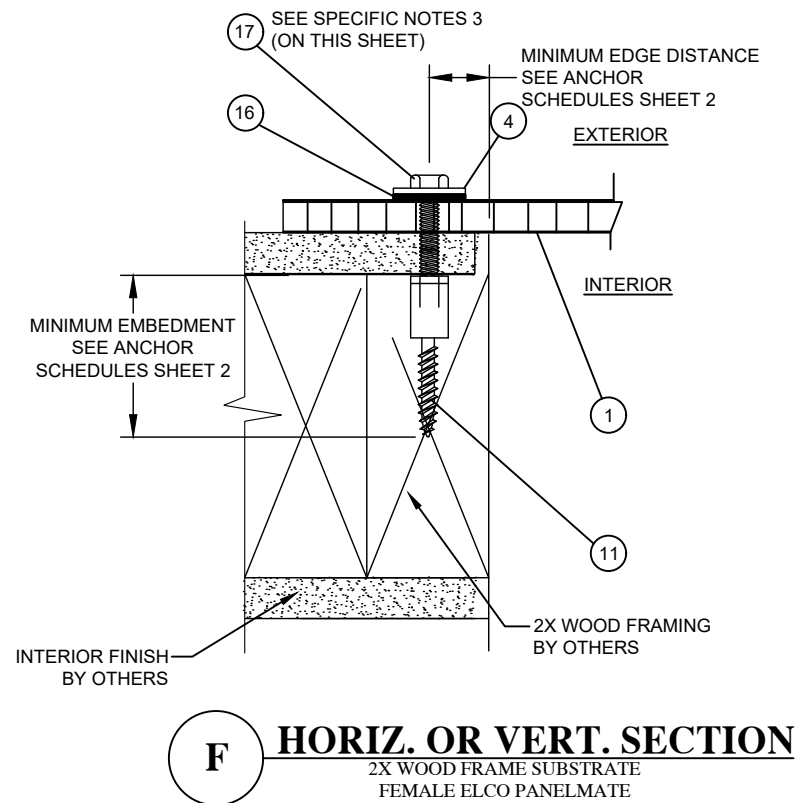
STORM DEPOT OF AMERICA, INC. DBA STORM BUSTERS®
720 N. HARBOR CITY BLVD.
MELBOURNE, FLORIDA 32925

TITLE: 16 MM CLEARVIEW® POLYCARBONATE STORM PANELS
ELEVATION AND ANCHOR LAYOUT

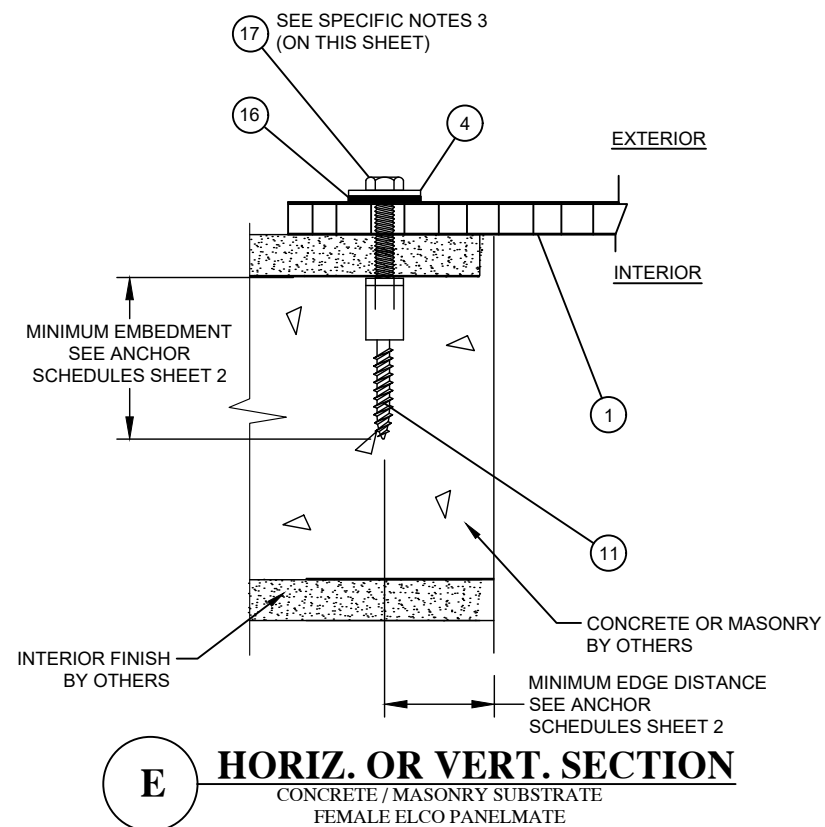
PREPARED BY:	BB	DATE:	02/11/09
SCALE:	N.T.S.	DRAWING NO.:	STB0022
REV:	B	SHEET:	5 OF 8

REV	DESCRIPTION	DATE	BY
B	UPDATE TO CURRENT EDITION OF FBC	10/1/15	RJA
A	UPDATE TO 2010 FBC	06/21/12	TJH

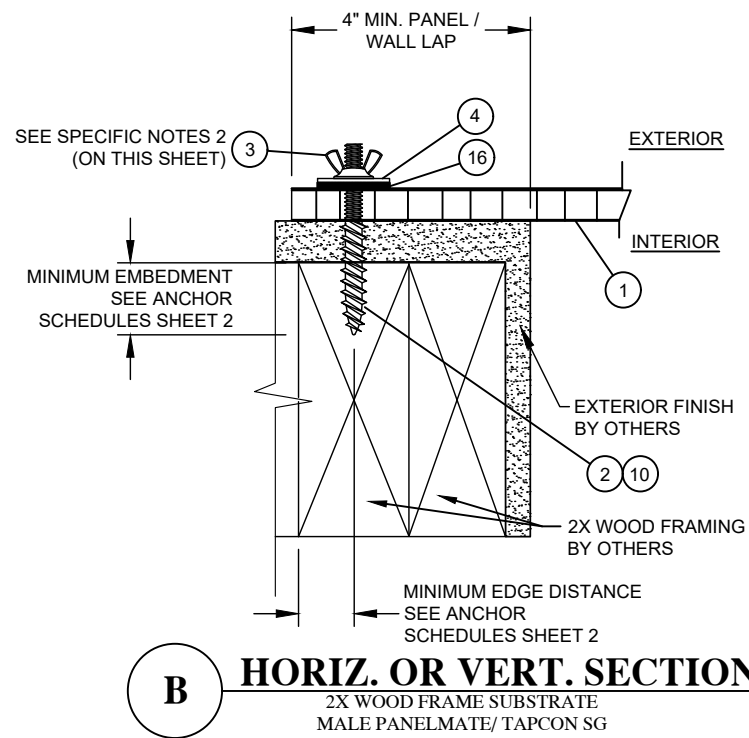
Robert J. Amoruso
Florida P.E. No. 49752



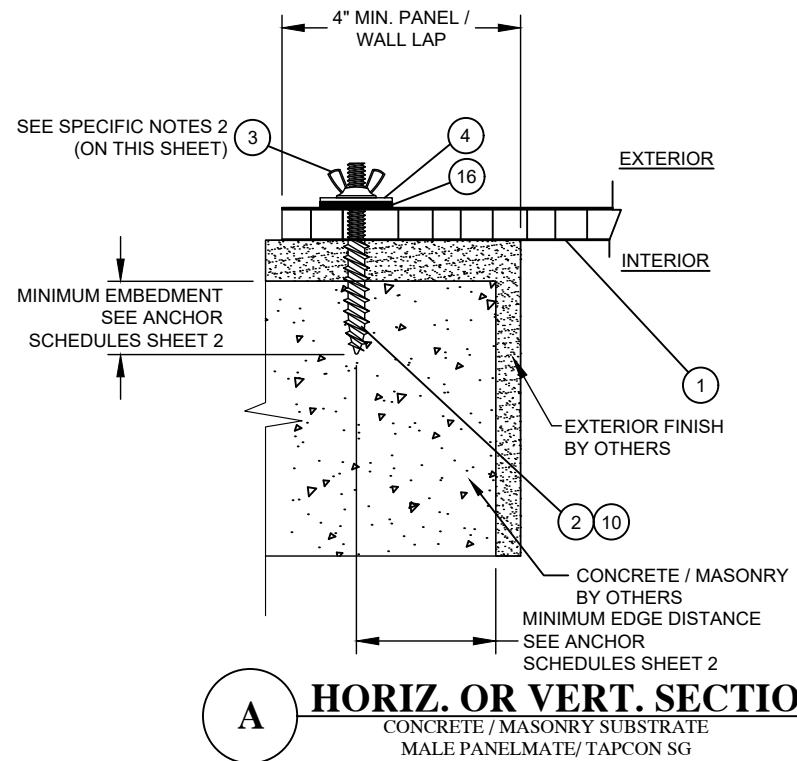
F **HORIZ. OR VERT. SECTION**
2X WOOD FRAME SUBSTRATE
FEMALE ELCO PANELMATE



E **HORIZ. OR VERT. SECTION**
CONCRETE / MASONRY SUBSTRATE
FEMALE ELCO PANELMATE



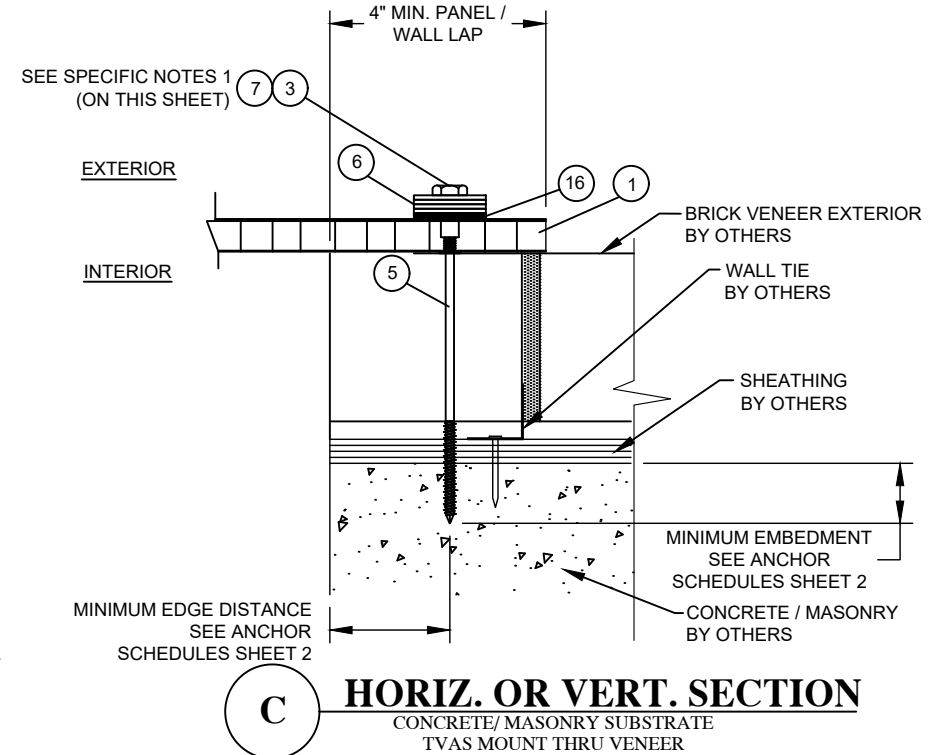
B **HORIZ. OR VERT. SECTION**
2X WOOD FRAME SUBSTRATE
MALE PANELMATE/ TAPCON SG



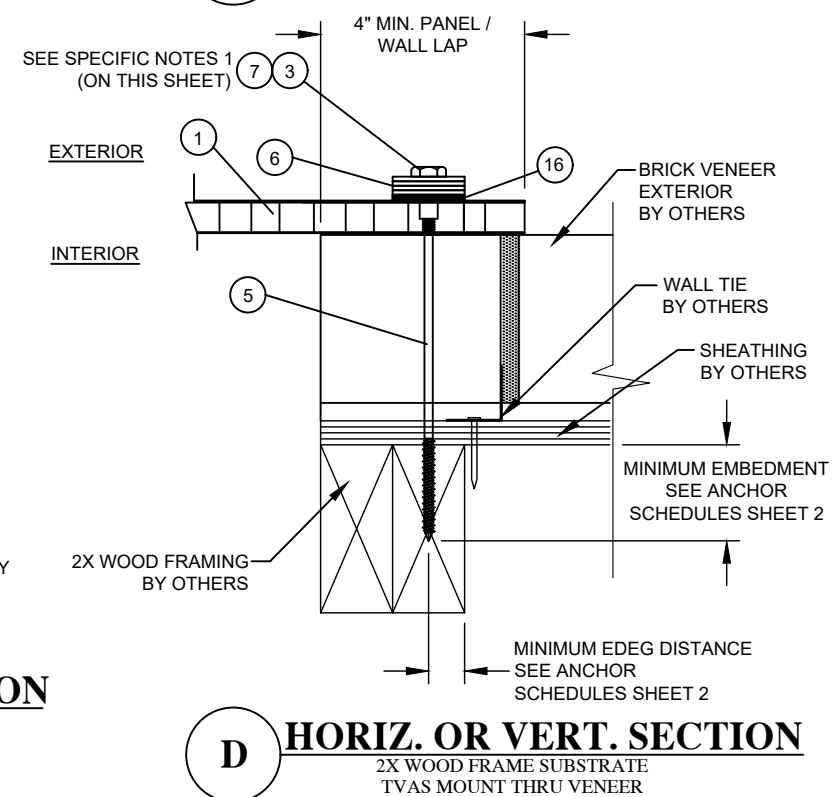
A **HORIZ. OR VERT. SECTION**
CONCRETE / MASONRY SUBSTRATE
MALE PANELMATE/ TAPCON SG

SPECIFIC NOTES:

1. MINIMUM SEX BOLT THREAD ENGAGEMENT OF 1/4" ON TVAS ANCHOR. WINGNUT MAY BE USED IN LIEU OF SEX BOLT IF THREADED STUD LENGTH PROJECTION WILL ALLOW FULL THICKNESS THREAD ENGAGEMENT OF WINGNUT ON ANCHOR STUD. IF WINGNUT IS USED, ONLY ONE STEEL WASHER IS REQUIRED.
2. WINGNUT TO ACHIEVE FULL THICKNESS THREAD ENGAGEMENT ON ANCHOR STUD.
3. BOLT LENGTH TO ACHIEVE 1/2" MIN. THREAD ENGAGEMENT INTO INSTALLATION ANCHORS.
4. CHOOSE PANELMATE INSERT LENGTH TO SATISFY COMBINED EMBEDMENT DEPTH AND FINISH THICKNESS.



C **HORIZ. OR VERT. SECTION**
CONCRETE/ MASONRY SUBSTRATE
TVAS MOUNT THRU VENEER



D **HORIZ. OR VERT. SECTION**
2X WOOD FRAME SUBSTRATE
TVAS MOUNT THRU VENEER

PROJECT NO. 415-0223		DATE:	02/11/09
UPDATE TO CURRENT EDITION OF FBC	10/11/15	DRAWING NO.:	STB0022
UPDATE TO 2010 FBC	06/21/12	SCALE:	N.T.S.
DESCRIPTION	REV	SHEET:	6 OF 8
RJA	BY	TJH	DATE

STORM DEPOT OF AMERICA, INC. DBA STORM BUSTERS®
720 N. HARBOR CITY BLVD.
MELBOURNE, FLORIDA 32925

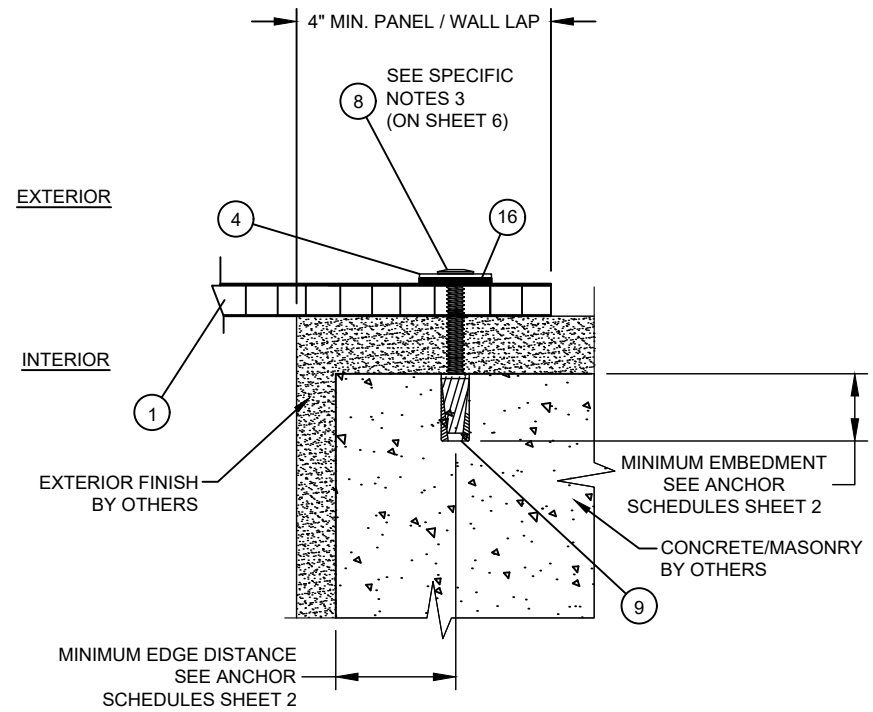
TITLE: 16 MM CLEARVIEW® POLYCARBONATE STORM PANELS
SECTIONS

PREPARED BY: BB
SCALE: N.T.S.
REV: B

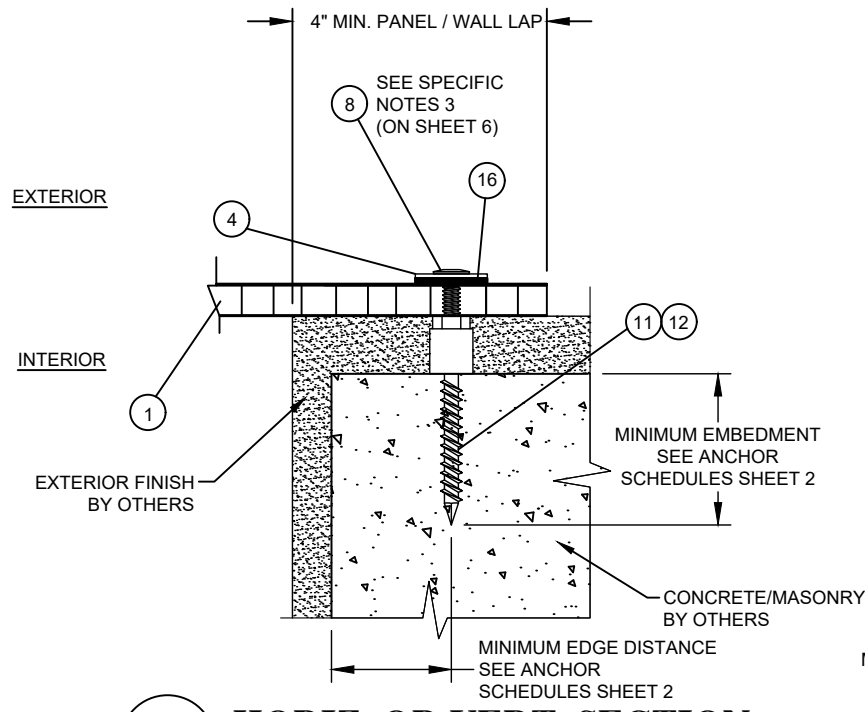
DATE: 02/11/09
DRAWING NO.: STB0022
SHEET: 6 OF 8

PTC PRODUCT DESIGN GROUP, LLC
PO BOX 520275
LONGWOOD, FLORIDA 32752
Phone: 321.690.1788
Fax: 321.690.1789
Email: info@ptc-corp.com

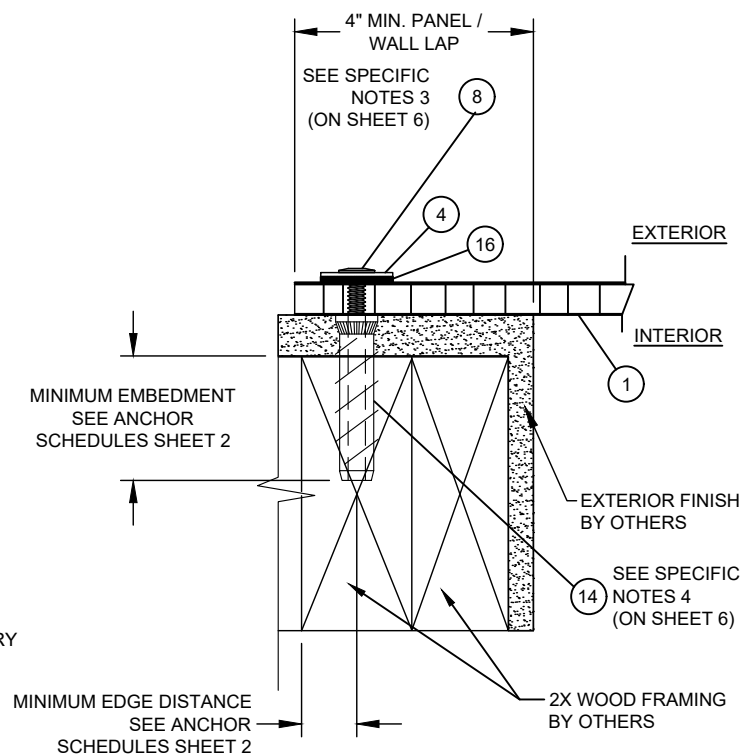
Robert J. Amoruso
Florida P.E. No. 49752



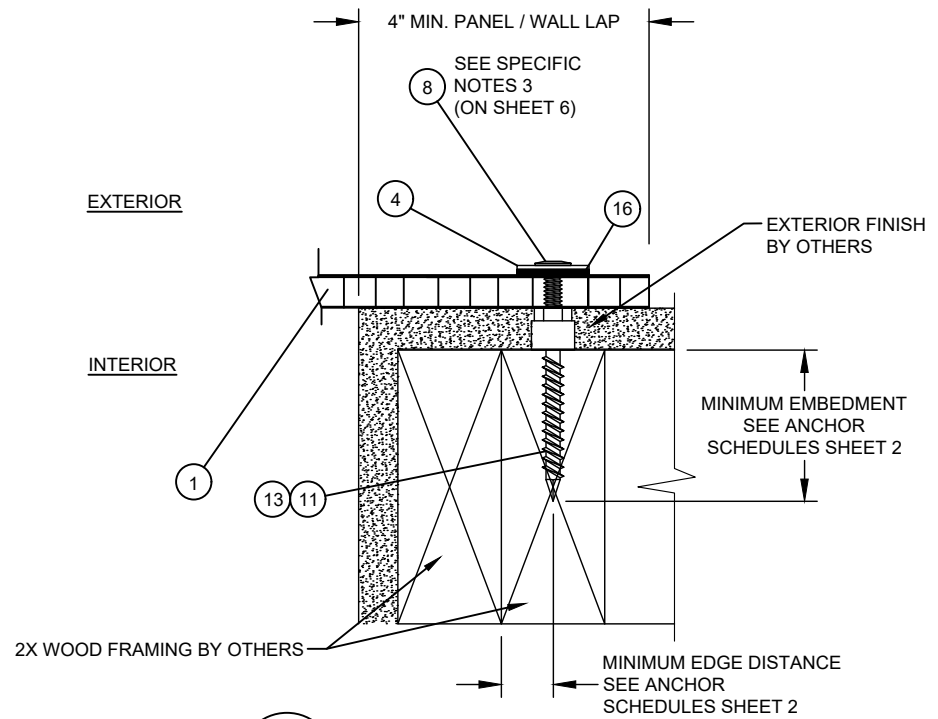
K **HORIZ. OR VERT. SECTION**
 CONCRETE/MASONRY SUBSTRATE
 ALL POINTS SOLID SET



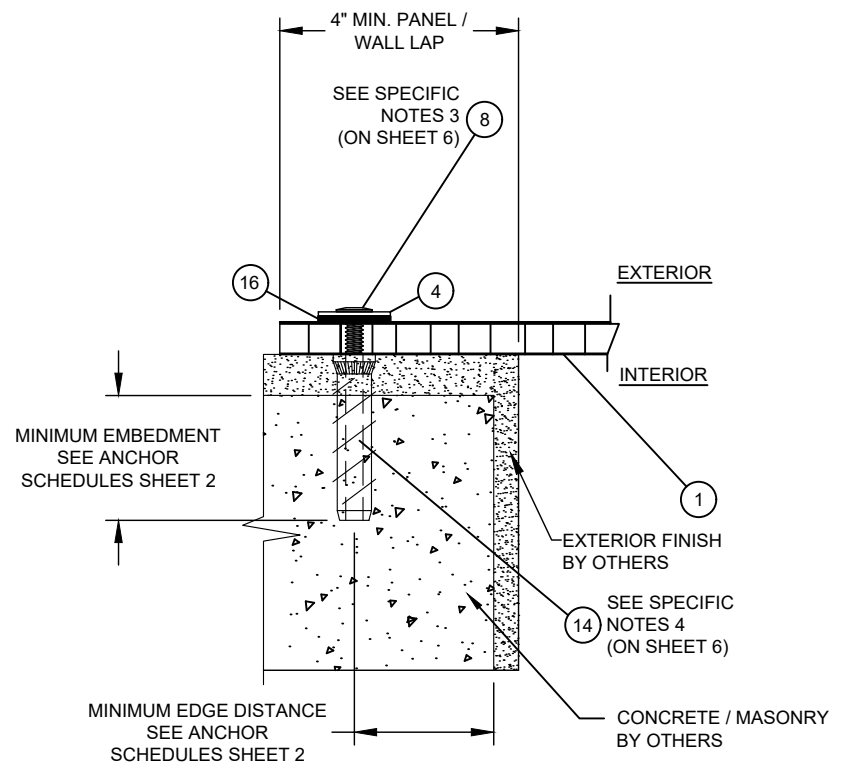
H **HORIZ. OR VERT. SECTION**
 CONCRETE/MASONRY SUBSTRATE
 FEMALE PANELMATE/ITW SAMMYS SSC



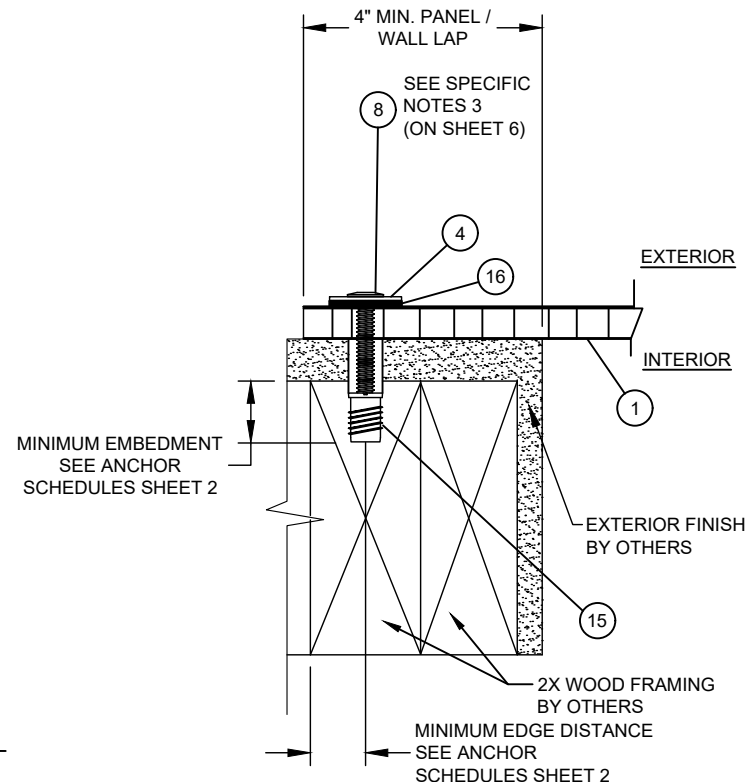
J **HORIZ. OR VERT. SECTION**
 2X WOOD FRAME SUBSTRATE
 PANELMATE INSERT



G **HORIZ. OR VERT. SECTION**
 2X WOOD FRAME SUBSTRATE
 FEMALE PANELMATE/ITW SAMMYS SSC



I **HORIZ. OR VERT. SECTION**
 CONCRETE/MASONRY SUBSTRATE
 PANELMATE INSERT



L **HORIZ. OR VERT. SECTION**
 2X WOOD FRAME SUBSTRATE
 ALL POINTS BRASS BUSHING

PROJECT NO. 415-0223

DATE	10/1/15	BY	RJA
DESCRIPTION	UPDATE TO CURRENT EDITION OF FBC	DATE	06/21/12
REV	A	DESCRIPTION	UPDATE TO 2010 FBC
REV	B	DESCRIPTION	UPDATE TO CURRENT EDITION OF FBC

STORM DEPOT OF AMERICA, INC. DBA STORM BUSTERS®
 720 N. HARBOR CITY BLVD.
 MELBOURNE, FLORIDA 32925

TITLE: 16 MM CLEARVIEW® POLYCARBONATE STORM PANELS
 SECTIONS

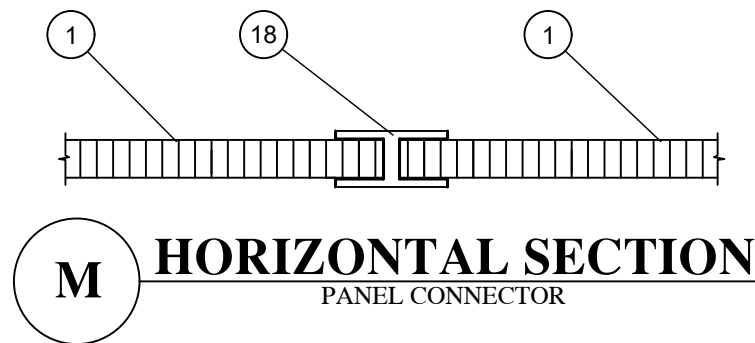
PREPARED BY: PTC
 DRAWN BY: BB
 SCALE: N.T.S.
 SHEET: 7 OF 8

DATE: 02/11/09
 DRAWING NO.: STB0022

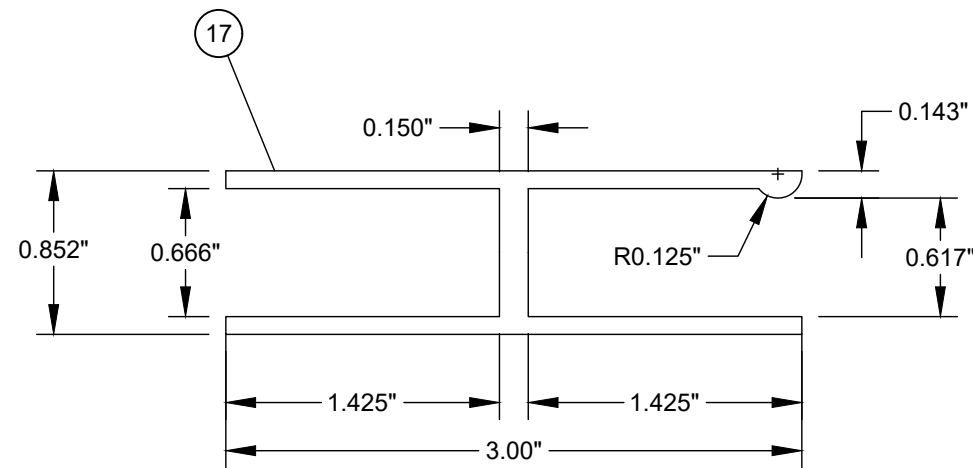
PTC PRODUCT DESIGN GROUP, LLC
 PO BOX 520775
 LONGWOOD, FLORIDA 32752
 Phone: 321.690.1788
 Fax: 321.690.1789
 Email: info@ptc-corp.com

Robert J. Amoruso
 Florida P.E. No. 49752

© Copyright 2009 - Storm Depot of America, Inc. dba Storm-Busters All Rights Reserved.



- SPECIFIC NOTES:**
1. BOLT LENGTH TO ACHIEVE 1/2" MIN. THREAD ENGAGEMENT INTO INSTALLATION ANCHORS .
 2. CHOOSE PANELMATE INSERT LENGTH TO SATISFY COMBINED EMBEDMENT DEPTH AND FINISH THICKNESS.



DETAIL
ALUMINUM PANEL CONNECTOR

BILL OF MATERIALS

ITEM #	PART #	QTY.	DESCRIPTION	MATERIAL	MAUFACTURER
1	----	AS REQ'D.	STORM BUSTERS CLEARVIEW 16mm (5/8" POLYCARBONATE STORM PANEL)	MARLON ST LONGLIFE MULTIWALL POLYCARBONATE	BRETT MARTIN
2	----	AS REQ'D.	1/4" TAPCON STORM GUARD (SG) (INSTALLATION ANCHOR)	CARBON STEEL	ITW BUILDEX
3	----	AS REQ'D.	1/4"-20 ZAMAC NICKEL PLATED WASHERED WINGNUT	CARBON STEEL	PURCHASE
4	----	AS REQ'D.	1/4" X 1-1/2" O.D. FLAT WASHER	CARBON STEEL	PURCHASE
5	----	AS REQ'D.	1/4" PANELMATE TVAS (INSTALLATION ANCHOR)	CARBON STEEL	ELCO
6	----	AS REQ'D.	3/8" X 1-1/2" FLAT O.D. WASHER	CARBON STEEL	PURCHASE
7	----	AS REQ'D.	3/8" X3/4" LONGHEAD SEX BOLT (1/4"-20 THREAD)	STAINLESS STEEL	PURCHASE
8	----	AS REQ'D.	1/4"-20 COMBINATION SIDEWALK BOLT	CARBON STEEL	ALL POINTS
9	----	AS REQ'D.	1/4"-20 SOLID SET MACHINE SCREW ANCHOR (INSTALLATION ANCHOR)	CARBON STEEL	ALL POINTS
10	----	AS REQ'D.	1/4" MALE PANELMATE (INSTALLATION ANCHOR)	CARBON STEEL	ELCO
11	----	AS REQ'D.	1/4" FEMALE PANELMATE (INSTALLATION ANCHOR)	CARBON STEEL	ELCO
12	----	AS REQ'D.	1/4" SAMMYS SSC (INSTALLATION ANCHOR)	CARBON STEEL	ITW BUILDEX
13	----	AS REQ'D.	1/4" SAMMYS SSW (INSTALLATION ANCHOR)	CARBON STEEL	ITW BUILDEX
14	----	AS REQ'D.	1/4"-20 PANELMATE INSERT (INSTALLATION ANCHOR)	CARBON STEEL	ELCO
15	----	AS REQ'D.	1/4"-20 X 5/8" ALL POINTS SLOTTED BRASS WOOD BUSHING (INSTALLATION ANCHOR)	BRASS	ALL POINTS
16	----	AS REQ'D.	1/4" X 1-1/2" O.D. EPDM WASHER	EPDM RUBBER	PURCHASE
17	----	AS REQ'D.	1/4"-20 HH BOLT	CARBON STEEL	PURCHASE
18	----	1	HORIZ. OR VERT. OR HORIZ. OR VERT. PANEL CONNECTOR	ALUMINUM	PURCHASE

PROJECT NO. 415-0223

STORM DEPOT OF AMERICA, INC. DBA STORM BUSTERS®
720 N. HARBOR CITY BLVD.
MELBOURNE, FLORIDA 32925

TITLE: 16 MM CLEARVIEW® POLYCARBONATE STORM PANELS COMPONENT, BILL OF MATERIALS & HORIZ. SECTION

PREPARED BY: BB
DRAWN BY: N.T.S.
DATE: 02/11/09
DRAWING NO: STB0022
SHEET: 8 OF 8
REV: B



Robert J. Amoruso
Florida P.E. No. 49752